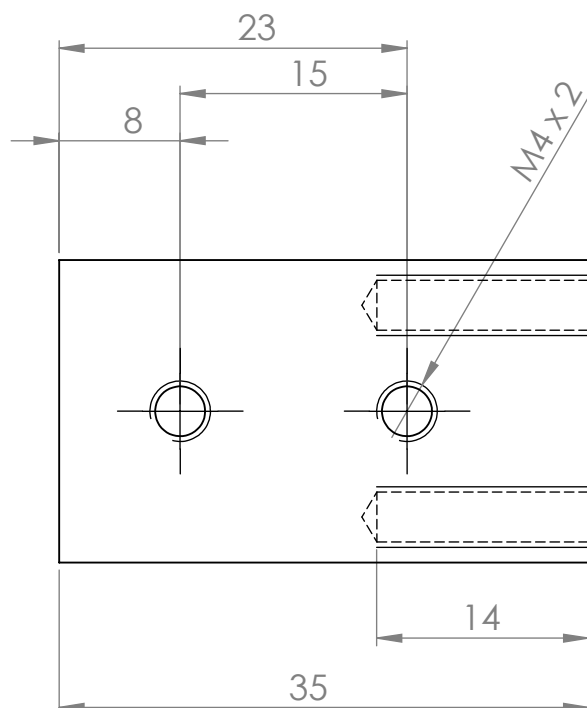
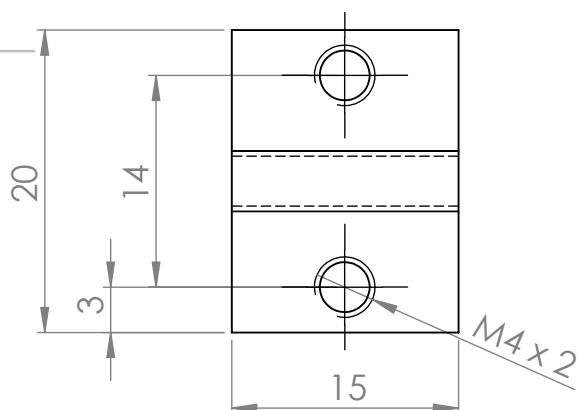
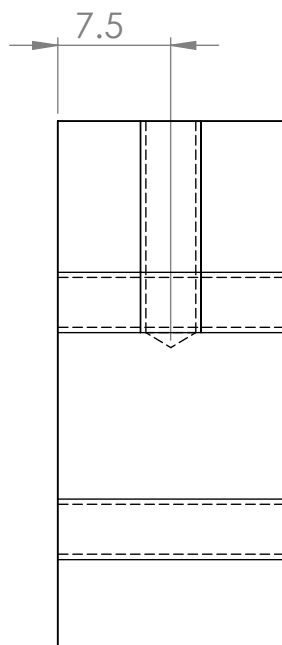


A

A 3D perspective drawing of a rectangular block. The block is oriented such that its top, front, and right side faces are visible. The top face is a light gray, while the front and side faces are a darker gray. There are four circular holes in total. Two holes are located on the front face, one near the top-left corner and one near the bottom-left corner. Two holes are located on the right side face, one near the top-right corner and one near the bottom-right corner. The holes are depicted with a dark gray outer ring and a lighter gray inner circle, suggesting a depth or a shadow. The block is drawn with black outlines for its edges.



REVISION

TITRE:	
No. DE PLAN	
tion_courroie_inferie	
A4	
ECHELLE:2:1	FEUILLE 1 SUR 1

Fixation_courroie_inferieur

44