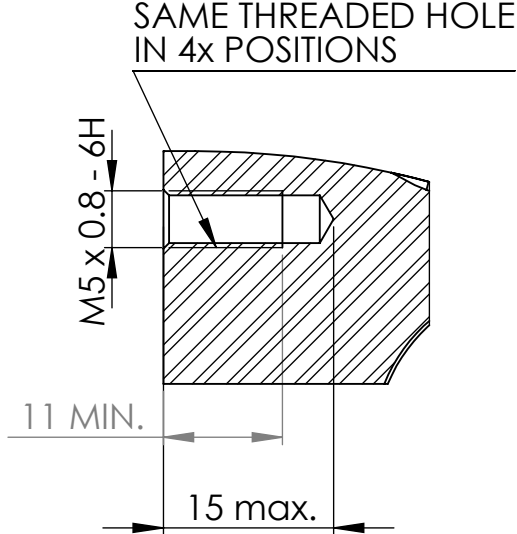
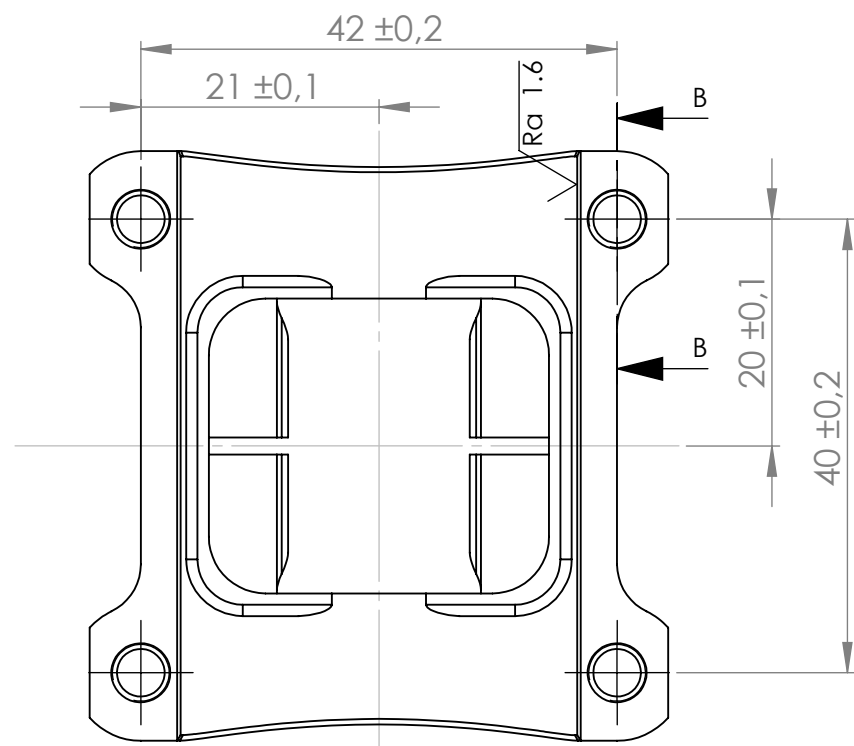
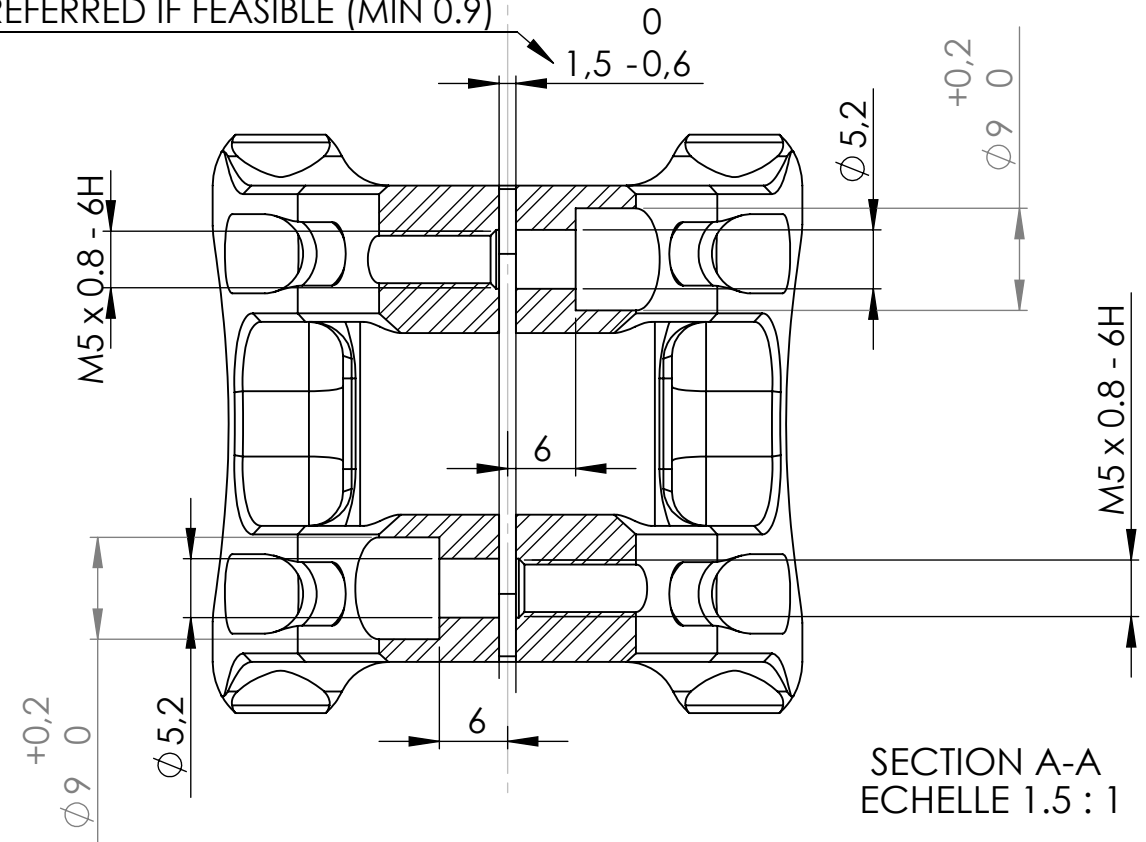


SECTION D-D  
ECHELLE 1.5 : 1

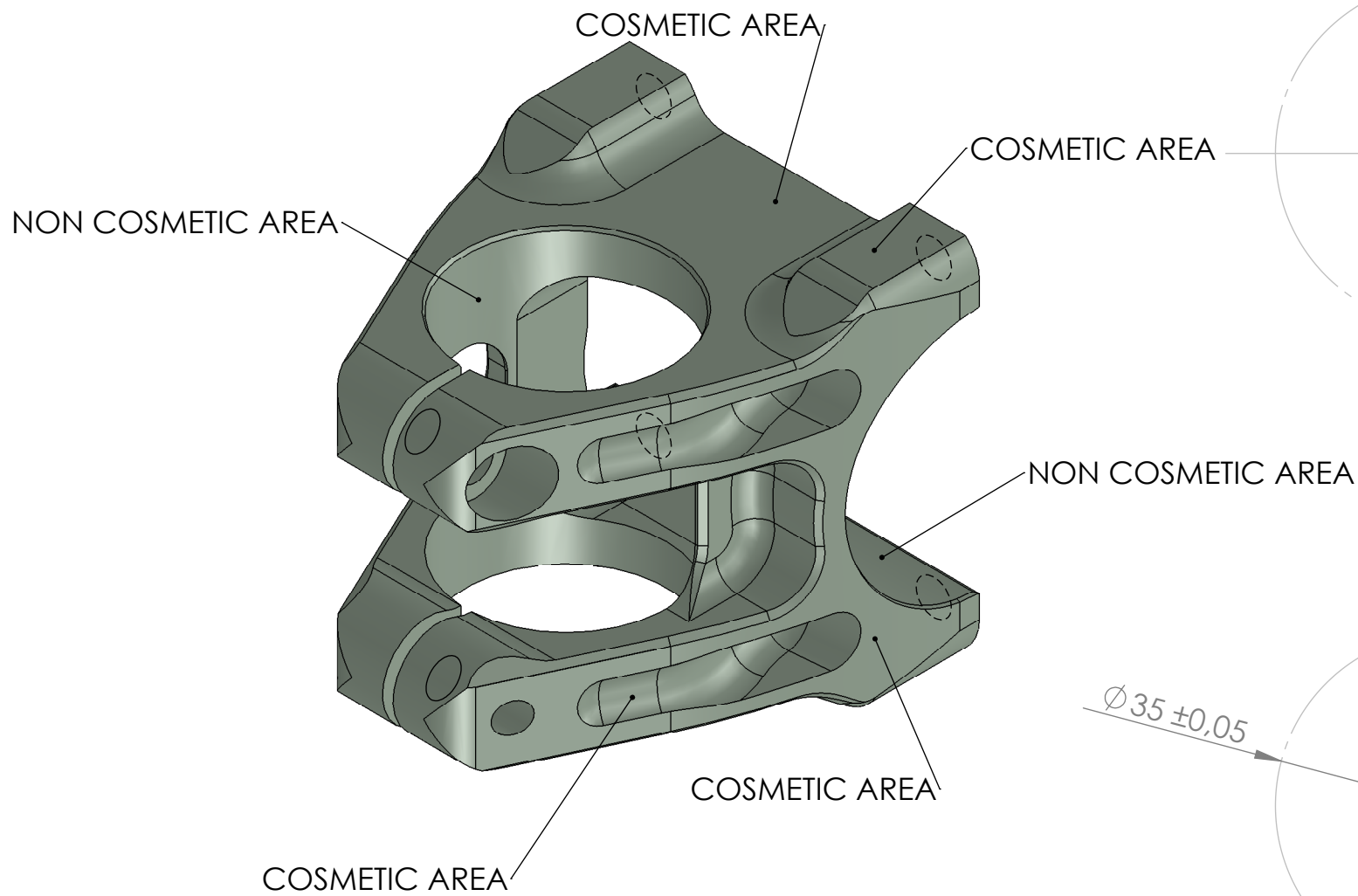


SECTION B-B  
ECHELLE 1.5 : 1

MAX DIMENSION INDICATED. SMALLER  
SLOT PREFERRED IF FEASIBLE (MIN 0.9)



SECTION A-A  
ECHELLE 1.5 : 1



- PART TO RECEIVE ANODIC OXIDATION COATING TYPE II WITH SEALING ACCORDING TO ISO7599 FOR COSMETIC REASONS ONLY  
THICKNESS: 8µm TO 25µm  
COLOR: REFER TO SEPARATED VARIANT TABLE  
SURFACE FINISH: GLOSSY (MAY REQUIRE MEDIA BLASTING BEFORE ANODIC OXIDATION)

- ALL SURFACES EXCEPT INTERNAL CYLINDERS AND HOLES ARE COSMETIC AREAS

- GENERAL ROUGHNESS Ra 3.2 MAX UNLESS OTHERWISE SPECIFIED.

- MATERIAL: ALUMINIUM 7075 T6; Re > 400 MPa, A = 5% MINI. ALTERNATIVE MATERIAL CAN BE PROPOSED, TO BE EVALUATED

- FOR ALL MISSING DIMENSIONS, REFER TO 3D MODEL.

- FOR ANY QUESTION REGARDING THIS DRAWING, PLEASE CONTACT DAMIEN VASSAULT; TEL: 33 (0)6 37 86 60 57; Email: dvassault@hotmail.com

- 3D MODEL AVAILABLE IN "SLDPRT", "STEP", "IGES", "PARASOLID" OR OTHER FORMAT.

|  |  |   |  |  |  |  |  |
|--|--|---|--|--|--|--|--|
| UNLESS OTHERWISE SPECIFIED<br>DIMENSIONS ARE IN MILLIMETERS<br>TOLERANCES ARE:<br>NO DECIMAL: +/- 0.2 MM<br>ONE PLACE DECIMAL: +/- 0.1 MM<br>TWO PLACE DECIMAL: +/- 0.05 MM<br>FRACTIONS DECIMALS ANGLES: +/- 1° |  | DV Bike Components                          |  |  |  |  |  |
|  |  |   |  |  |  |  |  |
| CAD GENERATED DRAWING,<br>DO NOT MANUALLY UPDATE   |  | MTB STEM DV-Eng                             |  |  |  |  |  |
| DRAWN<br>D. VASSAULT<br>30/09/21   |  | STEM STEER TUBE SIDE W40                    |  |  |  |  |  |
| CHECKED<br>D. VASSAULT<br>30/09/21   |  |   |  |  |  |  |  |
| RESP ENG<br>D. VASSAULT<br>30/09/21  |  |   |  |  |  |  |  |
| MFG ENG  |  |   |  |  |  |  |  |
| MATERIAL<br>ALUMINIUM 7075 T6<br>Re > 400 MPa, A = 5% MINI   |  | PART OR ASSEMBLY NUMBER<br>STEMP300921001-C |  |  |  |  |  |
| DO NOT SCALE DRAWING   |  |   |  |  |  |  |  |