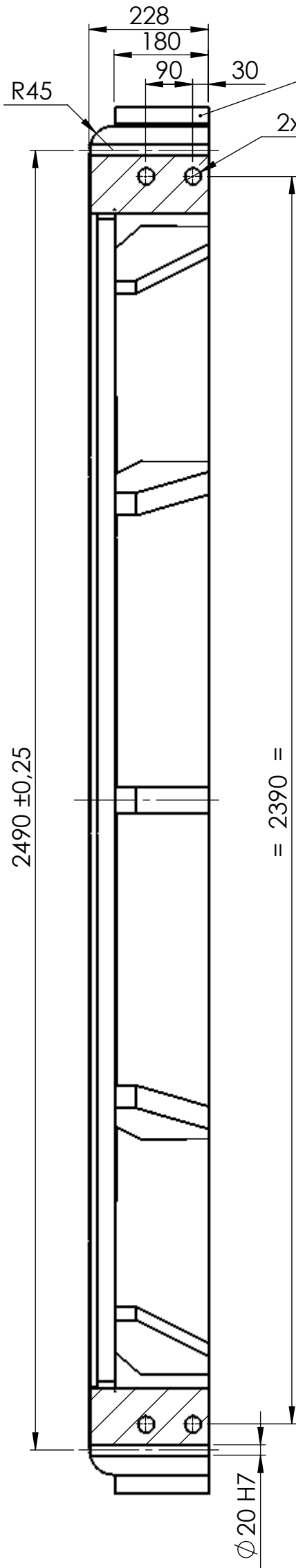
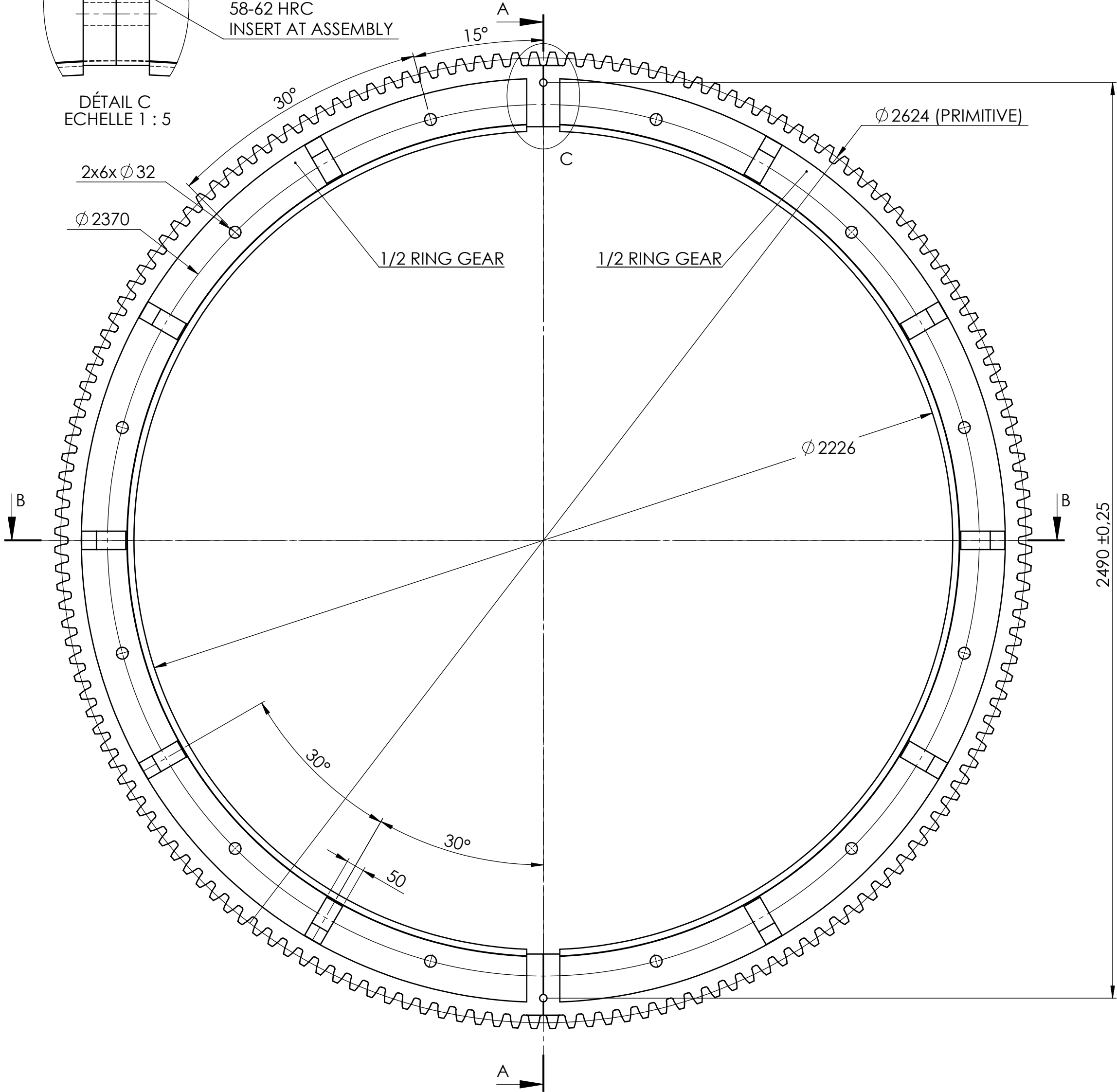


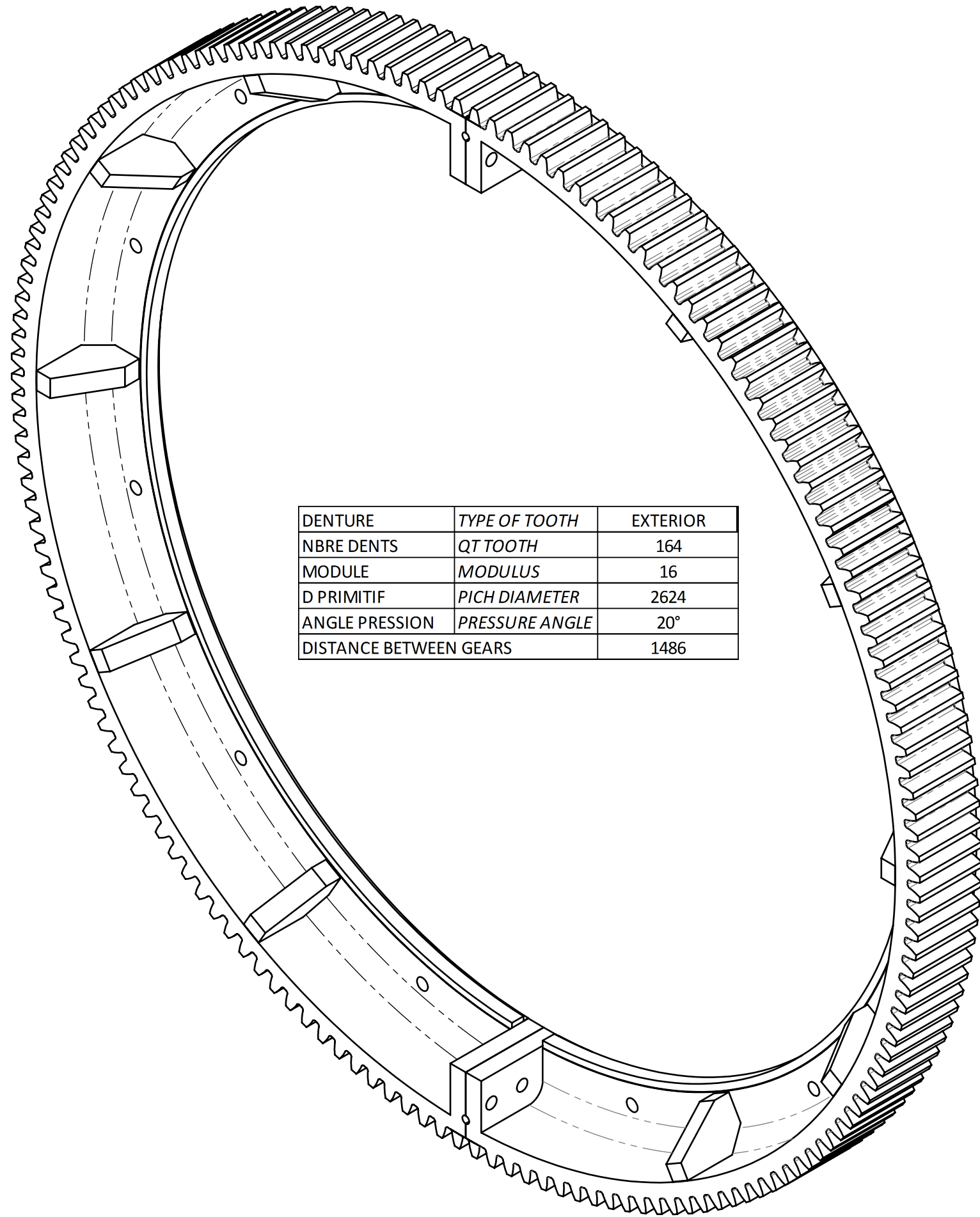
Ø 20 H7  
2x2 PINS Ø 20 L:100  
ISO 8734-NFE 27475  
TEMPERED STEEL FOR  
58-62 HRC  
INSERT AT ASSEMBLY

DÉTAIL C  
ECHELLE 1 : 5

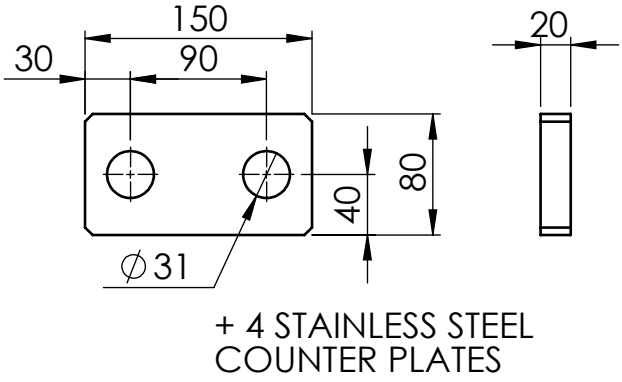


COUPE A-A

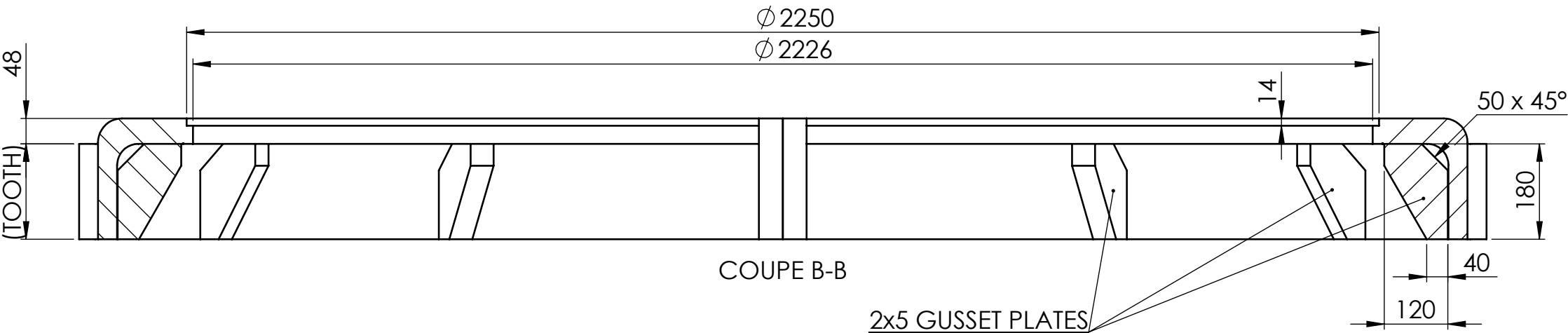
NORMAL GEARING



DENTURE	TYPE OF TOOTH	EXTERIOR
NBRE DENTS	QT TOOTH	164
MODULE	MODULUS	16
D PRIMITIF	PICH DIAMETER	2624
ANGLE PRESSION	PRESSURE ANGLE	20°
DISTANCE BETWEEN GEARS		1486



+ 4 STAINLESS STEEL  
COUNTER PLATES



COUPE B-B

2x5 GUSSET PLATES

NOTE: High frequency treatment, 210 to 280 HB

GOOD FOR  
EXECUTION

Drawn by : BOZON M  
Date : 12/10/2020  
Scale 1:10  
Material : 0.706 (EN-GJS-600-3)  
Finish : High frequency treatment  
Weight : 1104.38 Kg



Steelmag International SAS  
105, rue de Vaugraine  
F38830 Saint Pierr d'Allevard

Tel : +33 4 76 45 38 45  
Fax : +33 4 76 45 87 93

PLAN N° : F0782-COURONNE-RING GEAR.SLDPR

INDICES